

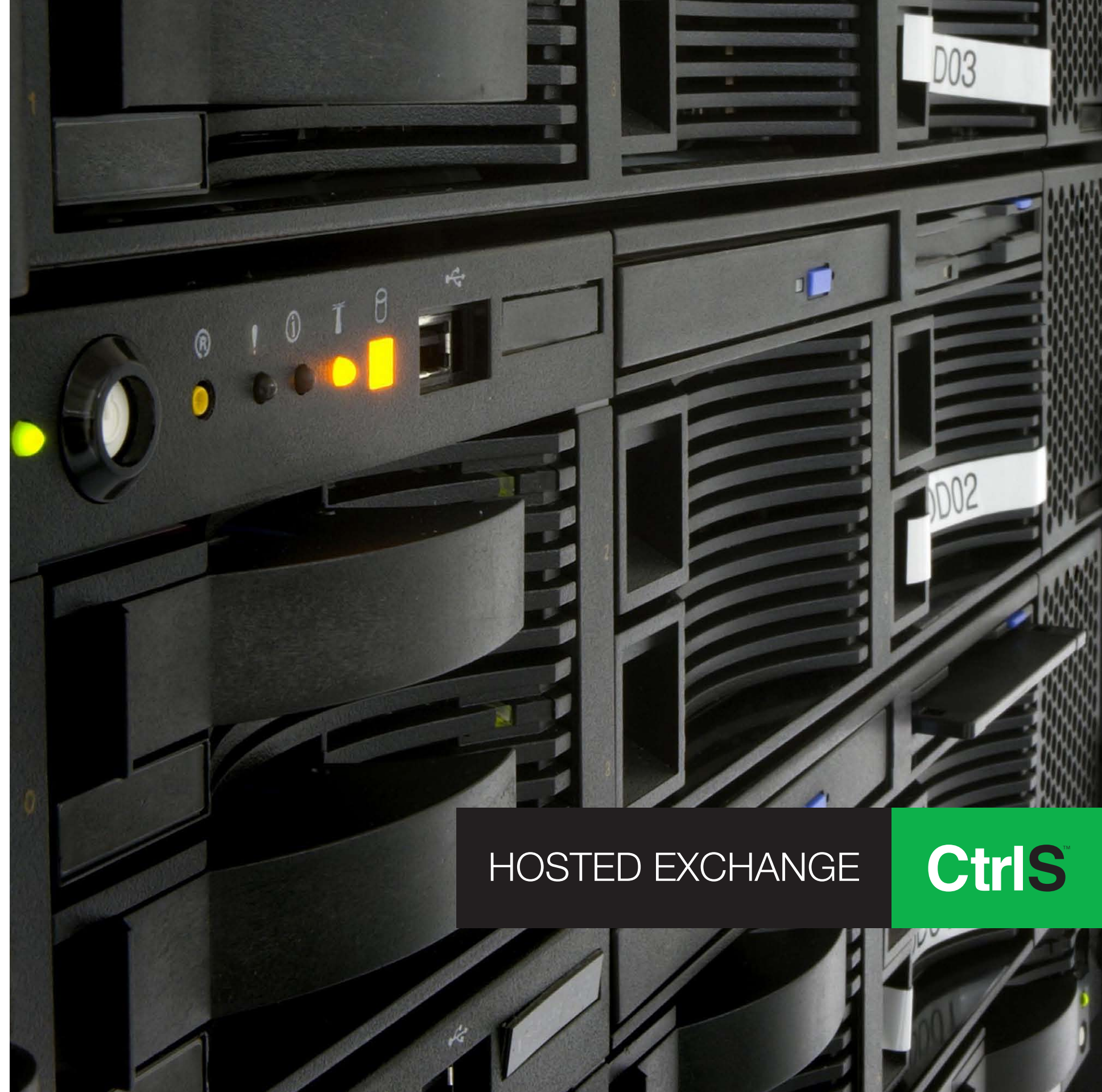
Promoted by the Pioneer Group and US\$20 billion NYSE-listed Och-Ziff Capital, and with over 20,000 racks planned across India, CtrlS is India's first Tier IV Datacenter. Headquartered at Hyderabad, India, we offer Infrastructure services, Dedicated hosting, Managed services, Disaster Recovery and Business Continuity Planning Services.

CtrlS[™]

+ 91 40 2311 2424
SMS CtrlS to 57575
marketing@ctrls.in
www.ctrls.in

HOSTED EXCHANGE

CtrlS[™]



The story so far.

96% of companies, a victim of virus, worm or Trojan attacks. 75% of all email is spam and still growing. High capex on servers, software, licenses etc. Severe shortage of expert resources.

Who can help? CtrlS Hosted Exchange.

Communicate from Inside Applications

- Rich presence throughout Microsoft Office Applications
- Ability to find the right person and use the right mode
- Shared context and content

Integration of Best of Breed email Technologies

- High-performance & reliable email systems
 - Robust secure data storage
- Strong antivirus and antispam protection

Reduced TCO

- Low capex as companies pay per user
- No yearly maintenance/upgrade costs

Integrated Communication Tools

- Integrated email, IM, voice, video
- Seamless transitions between modes
 - Wide range of devices



Reliable and Easy Service Delivery

- Comprehensive Transition Planning
- Ready to Use/L1 Helpdesk support/Training
- Customer Service Management

Anywhere Access

- From any telephone
- From any web browser
- From Windows mobile services

Adaptive and Scalable Email Solution

- Scalable mail box numbers and sizes
- Dedicated Network allowing Full Outlook MAPI
- Collaboration services through Sharepoint, CRM

World-Class Data Operation Center

- Operational Excellence with skilled resources
- 24xForever Proactive Support
- Tier IV Datacenter

Benefits

- Agility & competitive advantage by offering full-scale services
- Capitalize IT Budgets by timely upgrades to business applications
- Budgets would not be wasted on email needs as we handle it for you
- Economical services across all areas: facilities, maintenance, hardware, software, resources, and tools resulting in Low Cost of Ownership
- End-users in all regions leverage the same tools, features and quality consistent service globally
- Eliminate capital expense, get predictable growth costs as the model is based on Pay-per-User
- Improved ability to add new features quickly while insulating against staff churn and technology change
- High availability with stringent 99.95% SLA commitment
- 24xForever proactive support on demand

**HYBRID MAILING SOLUTION:
Hosted exchange + Linux Email
= Cost effective email service.**
A unique service offered by CtrlS

Services / Plans

Features / Plans	Basic Plan	Advanced Plan	Professional Windows Mobility Plan	Professional BlackBerry Plan
Microsoft Direct Push (ActiveSync)	x	x	✓	x
Outlook 2007 License	x	✓	✓	✓
Outlook 2007 (RPC / HTTPS)	x	✓	✓	✓
Shared Calendar / Group Scheduling	x	✓	✓	✓
Shared Contacts / Shared Folders	x	✓	✓	✓
Global Address Book	✓	✓	✓	✓
Personal Calendar	✓	✓	✓	✓
IMAP / POP	✓	✓	✓	✓
Outlook Web Access	✓	✓	✓	✓
Distribution List	✓	✓	✓	✓
Tasks / Notes	✓	✓	✓	✓
Premium Antivirus / Antispam	✓	✓	✓	✓
Mailbox Storage	25 MB	200 MB	300 MB	300 MB
Public Folder	✓	✓	✓	✓
Backup / Restore	✓	✓	✓	✓
Maximum Attachment Size	10 MB	10 MB	10 MB	10 MB
Control Panel	✓	✓	✓	✓
On Demand Support	✓	✓	✓	✓
Service Level Agreement	99.95%	99.95%	99.95%	99.95%

In-house vs CtrlS

When you manage your mail services in-house, it does become time-consuming. It also works out more expensive. **CtrlS Hosted Exchange provides you with a more efficient mail-management system.** In-house you would be looking at a cost-per-user of around Rs. 4320* and capex of Rs 13,96,300. **At CtrlS, the cost-per-user drops down to as little as Rs.1500 and capex becomes absolutely nil.** What's more, we provide failover systems, upgrade our services with the coming of new technology and build in n+n redundancies. **Our uptime is a record 100%.** CtrlS Hosted Exchange makes good business sense.

*See Overleaf to understand how we arrived at this figure.

Costs of In-House Exchange Hosting with very minimum specs

Items		Unit Cost	Quantity	Total Cost	Unit Cost	Quantity	Total Cost
64 bit Hardware Servers	Required	200000	2	400000	-	-	-
Storage	Optional	205000	0	0	-	-	-
Tape Drive for Backup	Required	150000	1	150000	-	-	-
Windows 2007 std 64 bit server	Required	40000	2	80000	-	-	-
Exchange 2007 server std Edition	Required	35000	2	70000	-	-	-
Exchange server std Edition 100 Licenses	Required	2900	100	290000	-	-	-
Outlook licenses	Required	1993	100	199300	-	-	-
Email Security (Antispam solution) 100 users	Required	75000	1	75000	-	-	-
Antivirus Solution	Required	20000	2	40000	-	-	-
IT Staff time to development	Required	30000	1	30000	-	-	-
UPS Power requirement 1.5 KVA for servers	Required	30000	1	30000	-	-	-
Power charges for 2 servers (10 units*10 Rs*30days)	Required	3000	12	36000	3000	12	36000
Bare minimum IT Staff time to maintenance	Required	30000	12	360000	30,000	12	360000
Quality physical environment and cooling (10units*10 Rs*30days)	Required	3000	12	36000	3000	12	36000
Total Cost			Capex	1396300	Yearly Recurring Cost		432000